

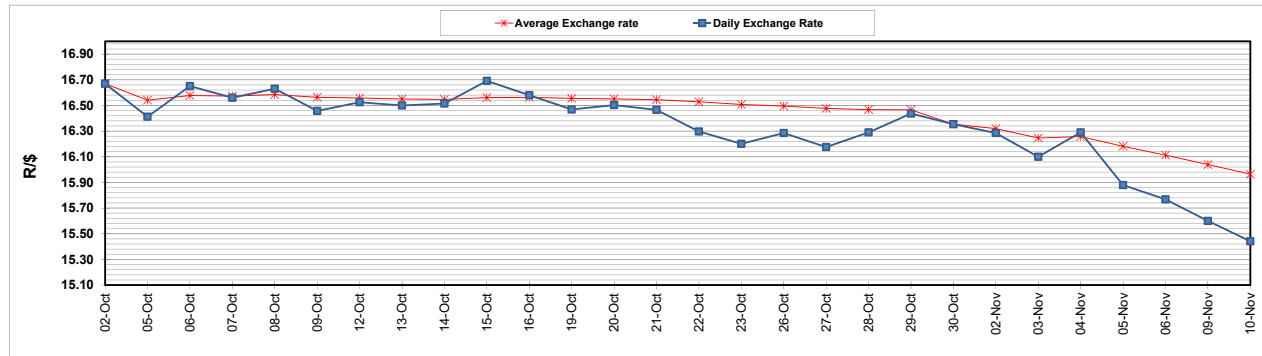
	PETROL 95 ULP	PETROL 93 ULP & LRP	DIESEL 0.05%	DIESEL 0.005%	ILL. PAR.
GAUTENG PUMP PRICE (SA c/l) AS FROM 04/11/2020	1,459.000	1,439.000	-	-	-
WHOLESALE PRICE (SA c/l) AS FROM 04/11/2020	-	-	1,225.560	1,227.960	655.828
SINGLE NATIONAL MAXIMUM RETAIL PRICE	-	-	-	-	818.000
BASIC FUEL PRICE - 10/11/2020 (SA c/l)	488.808	478.210	486.705	488.370	471.523
PRESS RELEASE CONTRIBUTION TO BFP 04/11/2020 - 10/11/2020 (SA c/l)	506.470	496.470	474.630	477.030	451.128
UNIT OVER/(UNDER) RECOVERY - 10/11/2020 (SA c/l)	17.662	18.260	(12.075)	(11.340)	(20.395)
AVERAGE BASIC FUEL PRICE 30/10/2020 - 10/11/2020	471.352	462.850	463.849	466.893	448.085
AVERAGE UNIT OVER/(UNDER) RECOVERY 30/10/2020 - 10/11/2020	45.243	43.745	15.281	14.262	(2.582)

### ANALYSIS MOVEMENT OF AVERAGE OVER/(UNDER) RECOVERY

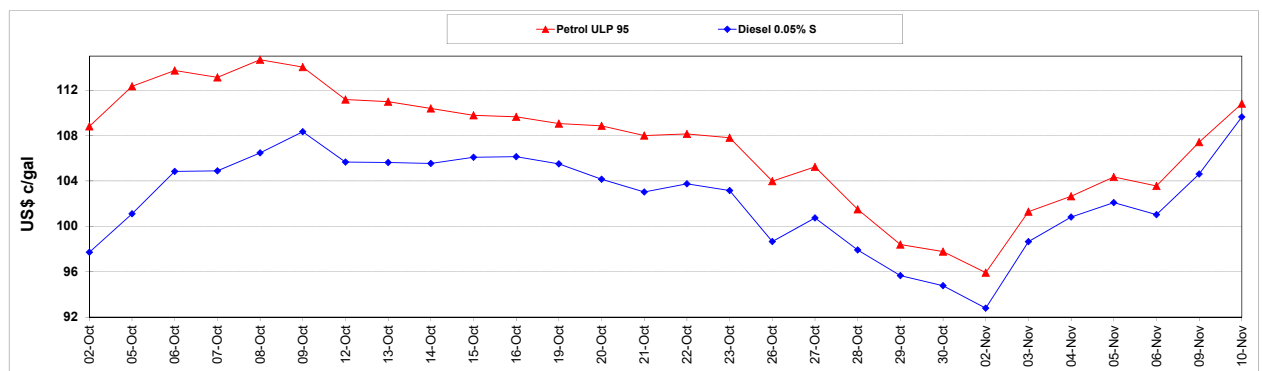
	PETROL 95	PETROL 93	DIESEL 0.05%	DIESEL 0.005%	ILL. PAR.
- MOVEMENT IN INTERNATIONAL PRODUCT PRICES	30.448	29.217	0.722	(0.393)	(16.647)
- MOVEMENT IN EXCHANGE RATE	14.795	14.528	14.559	14.655	14.065
AVERAGE UNIT OVER/(UNDER) RECOVERY 30/10/2020 - 10/11/2020	45.243	43.745	15.281	14.262	(2.582)

**R/\$ EXCHANGE RATE - (R/\$15.4410 - 10/11/2020)**

### EXCHANGE RATE USED IN BASIC FUEL PRICE



### INTERNATIONAL PRODUCT PRICES OF BASKET USED IN BASIC FUEL PRICE



### BASIC FUEL PRICE IN SA CENTS PER LITRE

